

RALLY ELBA

Parcheggia il tuo veicolo in modo da non bloccare strade di accesso

Don't block the access routes while parking your vehicle

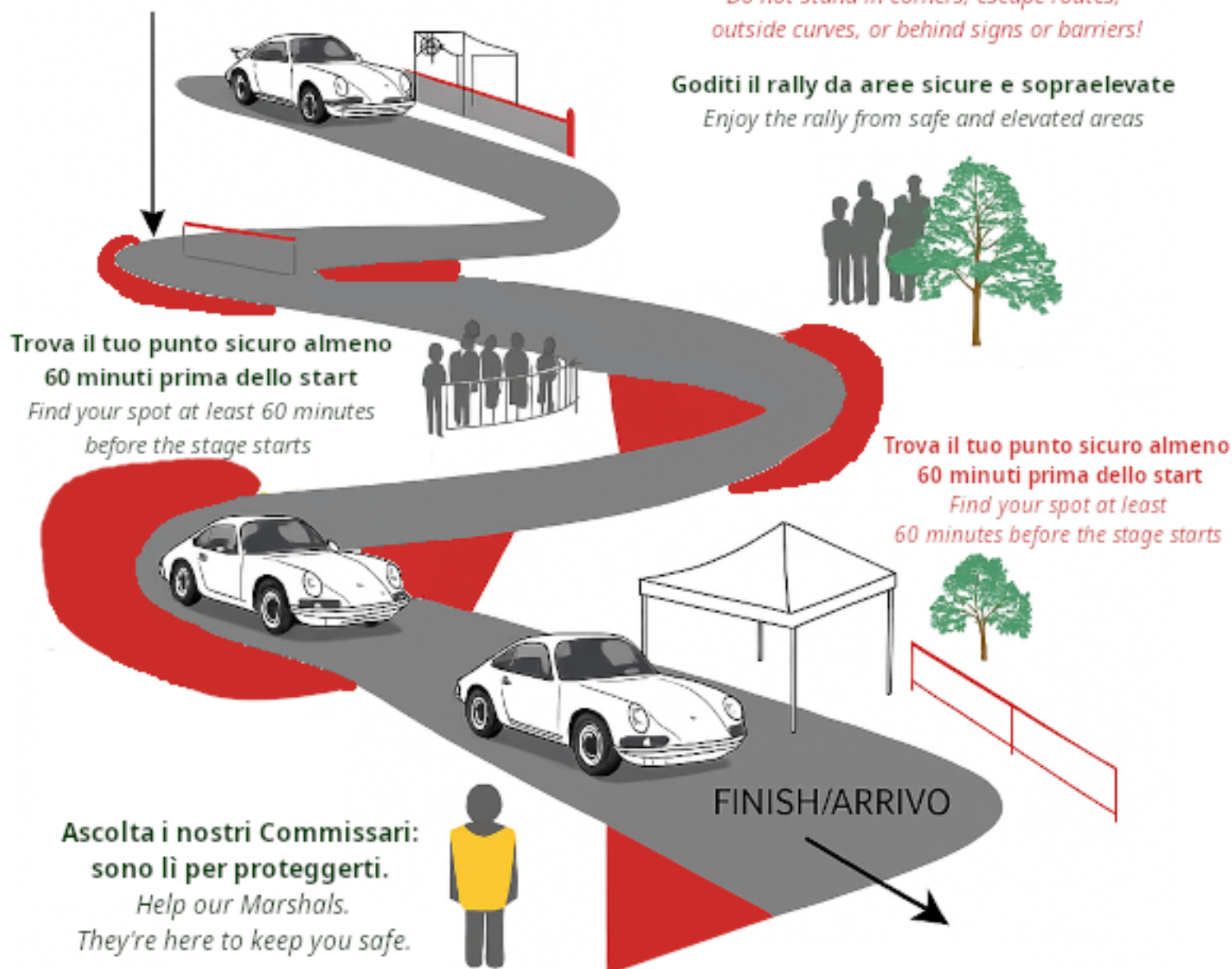
Non fermarti in curve, vie di fuga o zone esterne alle curve.

Do not stand in corners, escape routes, outside curves, or behind signs or barriers!

Goditi il rally da aree sicure e sopraelevate

Enjoy the rally from safe and elevated areas

START/PARTENZA



Evita le zone pericolose: la prova può essere ritardata o annullata se ci sono spettatori in aree non sicure!

Stay out of danger: the stage may be delayed or cancelled if spectators are found in unsafe areas.



GODITI IL RALLY IN SICUREZZA

ENJOY THE RALLY SAFELY